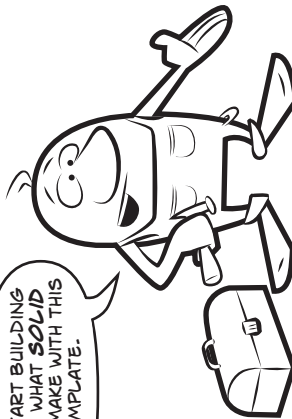


# Geometric Solid Template

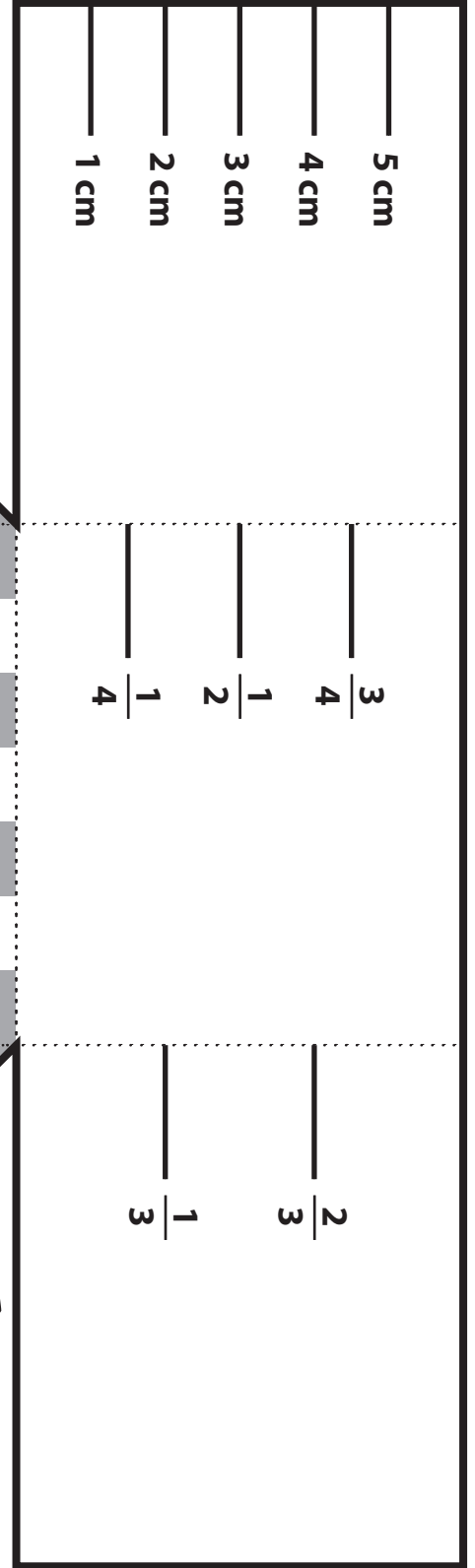
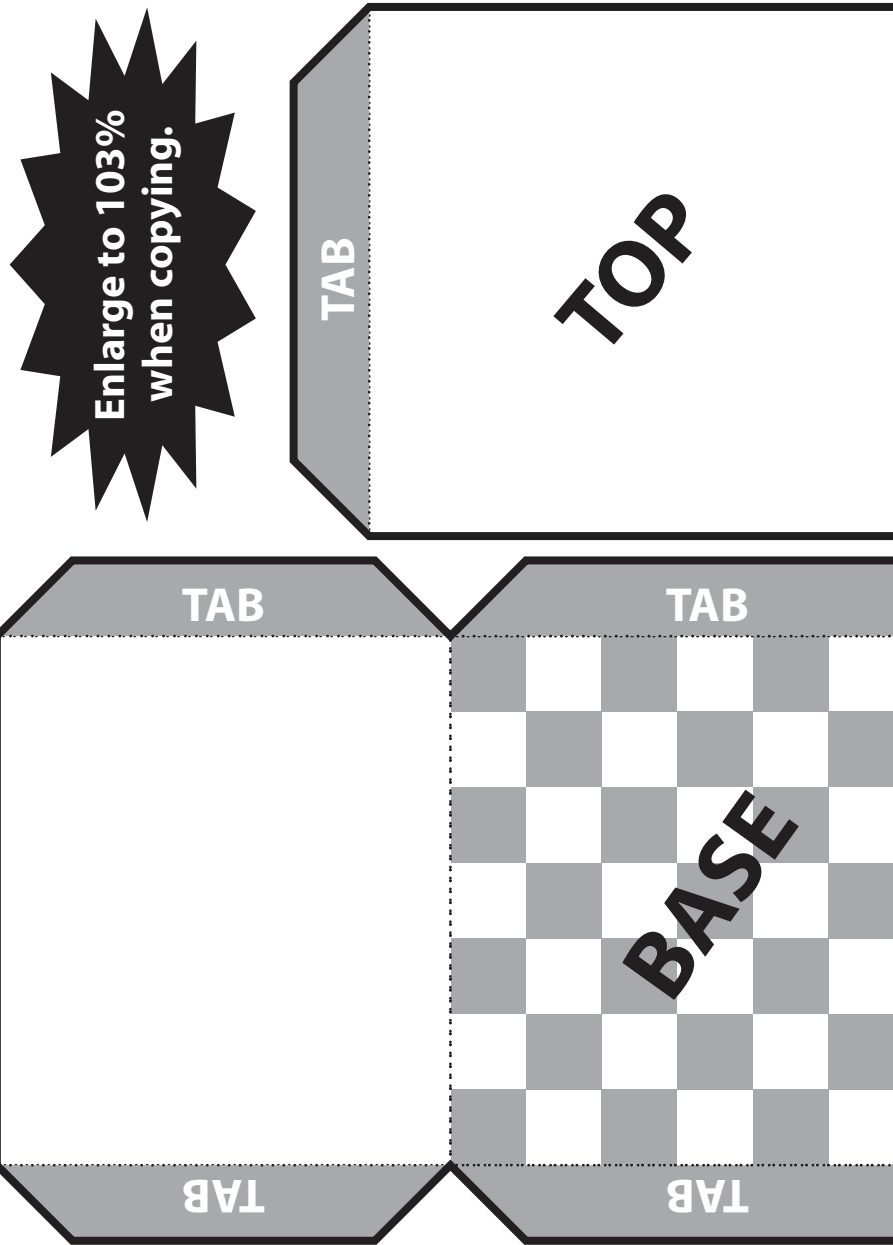


*What solid will this net make?*

1. Cut out along the bold lines.
2. Fold along the dotted lines. (Use the edge of a ruler or the straight edge of a desk to get a sharp crease.)
3. Fold up into a solid using the tabs to tape or glue it.
4. Attach the top by gluing or taping the tab.



LET'S START BUILDING AND SEE WHAT **SOLID** WE CAN MAKE WITH THIS TEMPLATE.



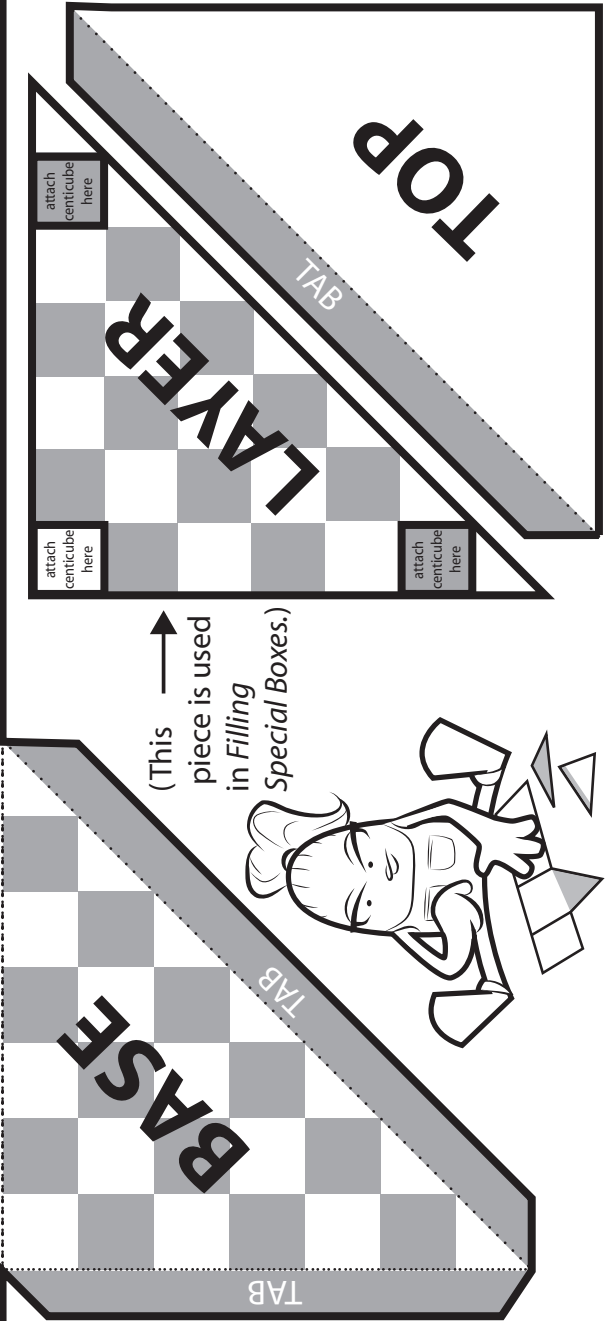
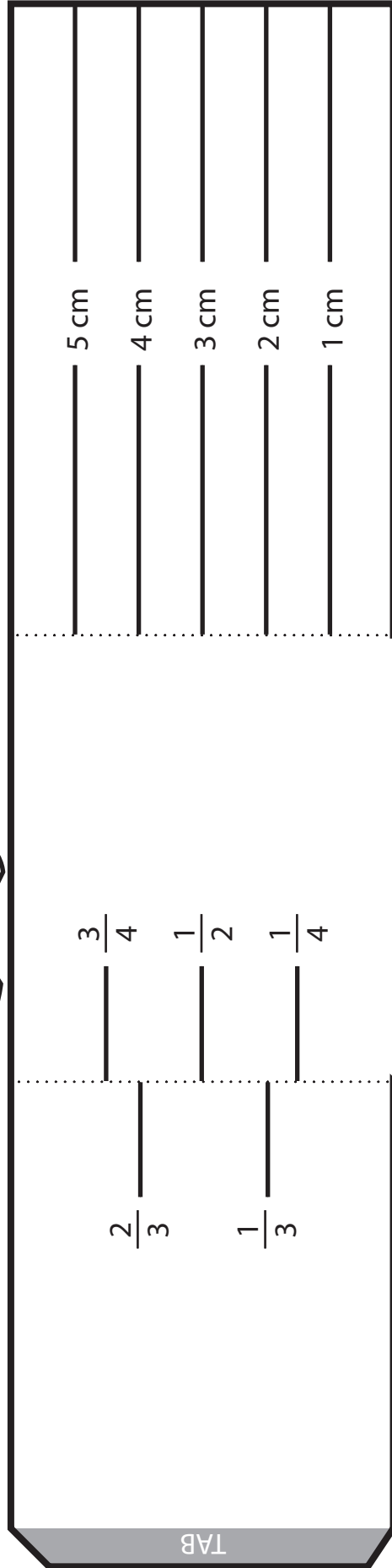
**Enlarge to 103% when copying.**

# Geometric Solid Template

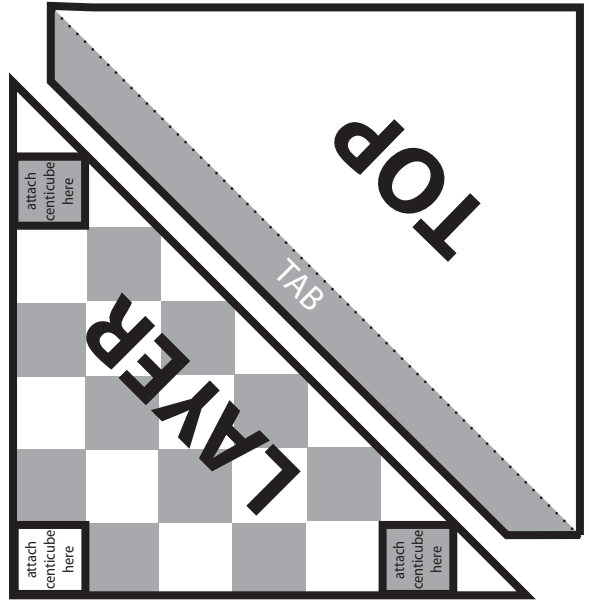
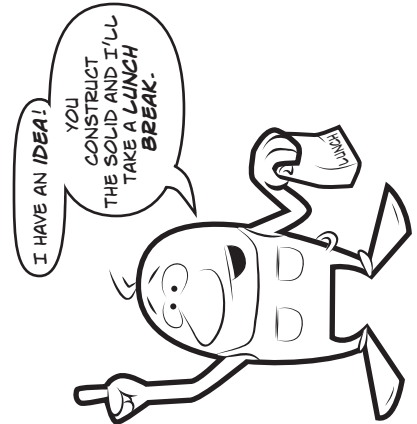


What solid will this net make?

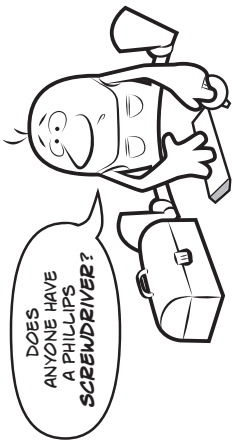
1. Cut out along the bold lines.
2. Fold along the dotted lines. (Use the edge of a ruler or the straight edge of a desk to get a sharp crease.)
3. Fold up into a solid using the tabs to tape or glue it.
4. Attach the top by gluing or taping the tab.



(This piece is used in Filling Special Boxes.)



# Geometric Solid Template



What solid will this net make?

1. Cut out along the bold lines.
2. Fold along the dotted lines. (Use the edge of a ruler or the straight edge of a desk to get a sharp crease.)
3. Fold up into a solid using the tabs to tape or glue it.
4. Attach the top by gluing or taping the tab.

Match Line. Do not fold.

\_\_\_\_\_ 5 cm

\_\_\_\_\_ 4 cm

\_\_\_\_\_ 3 cm

\_\_\_\_\_ 2 cm

\_\_\_\_\_ 1 cm

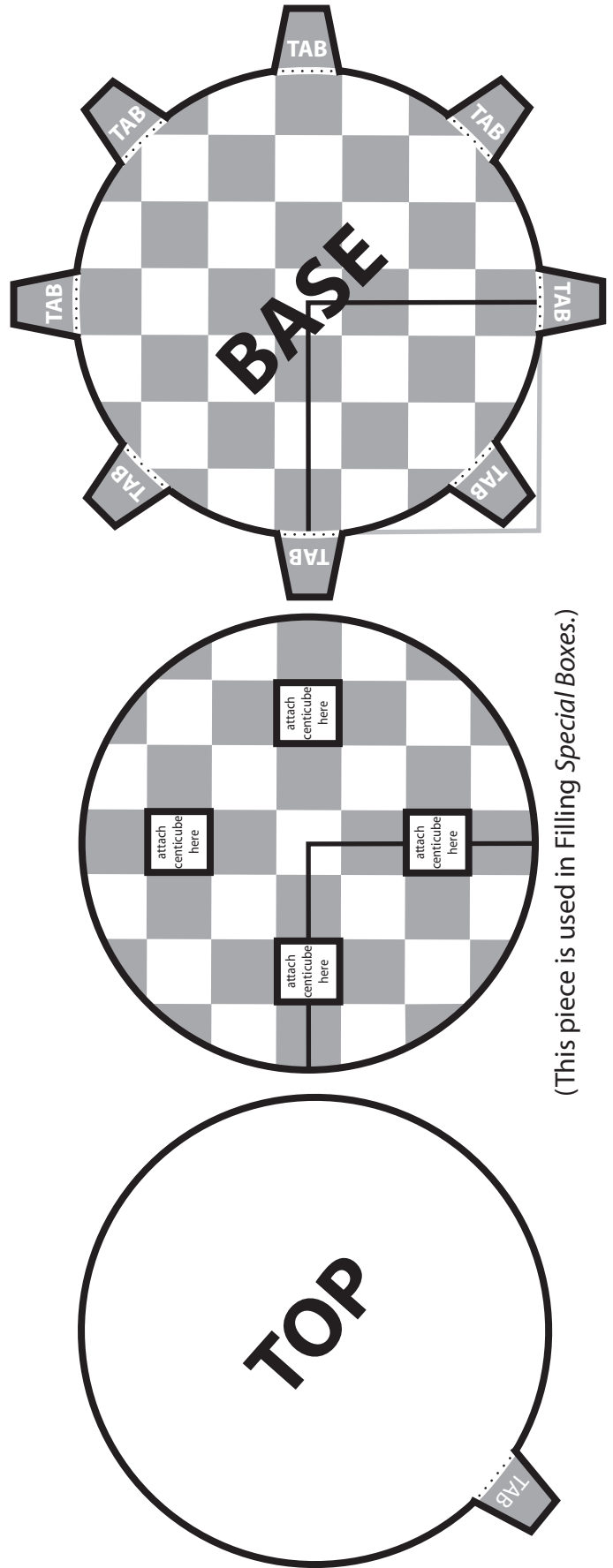
\_\_\_\_\_  $\frac{3}{4}$

\_\_\_\_\_  $\frac{1}{2}$

\_\_\_\_\_  $\frac{1}{4}$

\_\_\_\_\_  $\frac{2}{3}$

\_\_\_\_\_  $\frac{1}{3}$



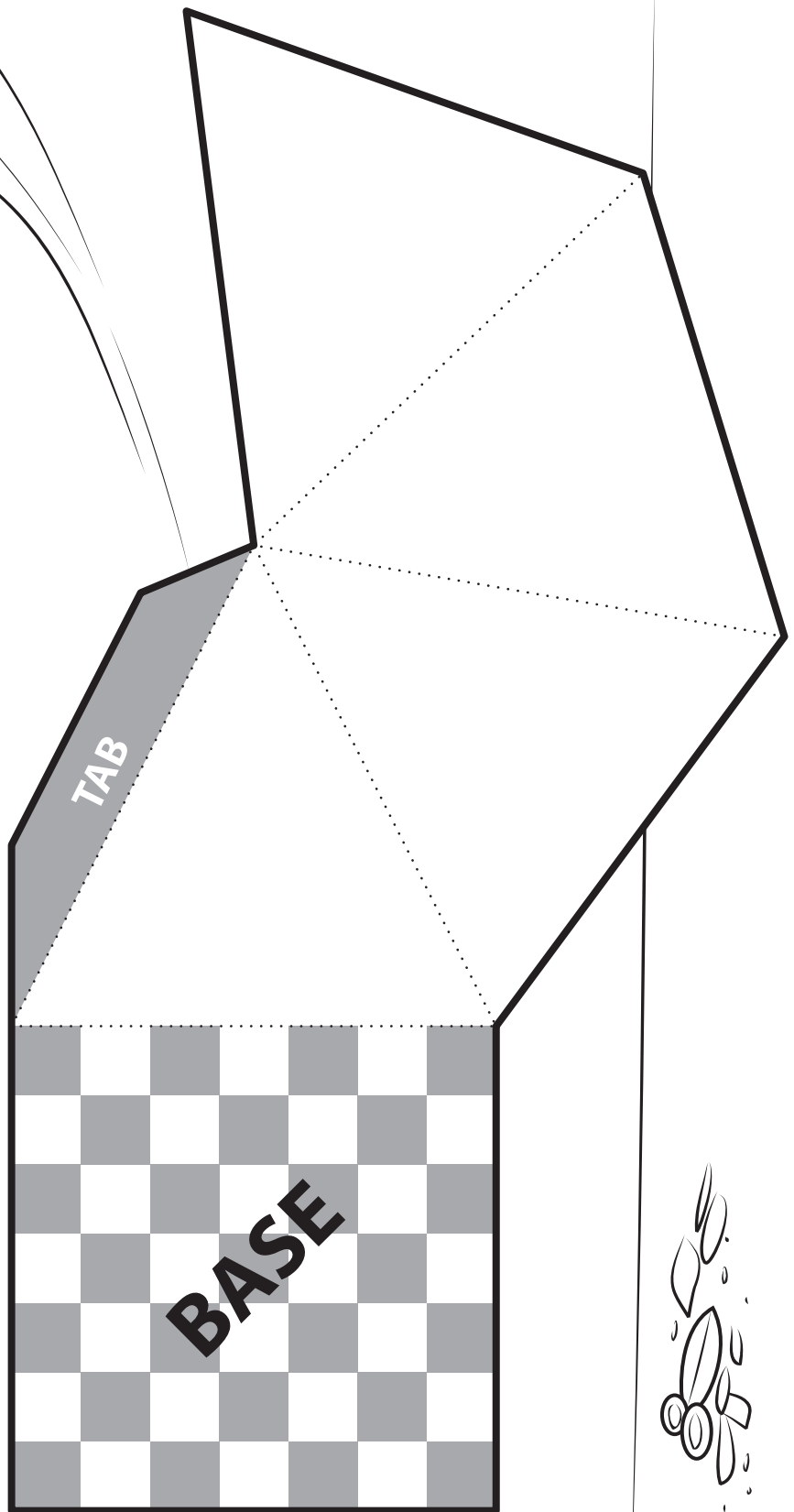
(This piece is used in Filling Special Boxes.)

# Geometric Solid Template



*What solid will this net make?*

1. Cut out along the bold lines.
2. Fold along the dotted lines. (Use the edge of a ruler or the straight edge of a desk to get a sharp crease.)
3. Fold up into a solid using the tabs to tape or glue it.



# Geometric Solid Template



What solid will this net make?

1. Cut out along the bold lines.
2. Fold along the dotted lines.  
(Use the edge of a ruler or the straight edge of a desk to get a sharp crease.)
3. Fold up into a solid using the tabs to tape or glue it.

